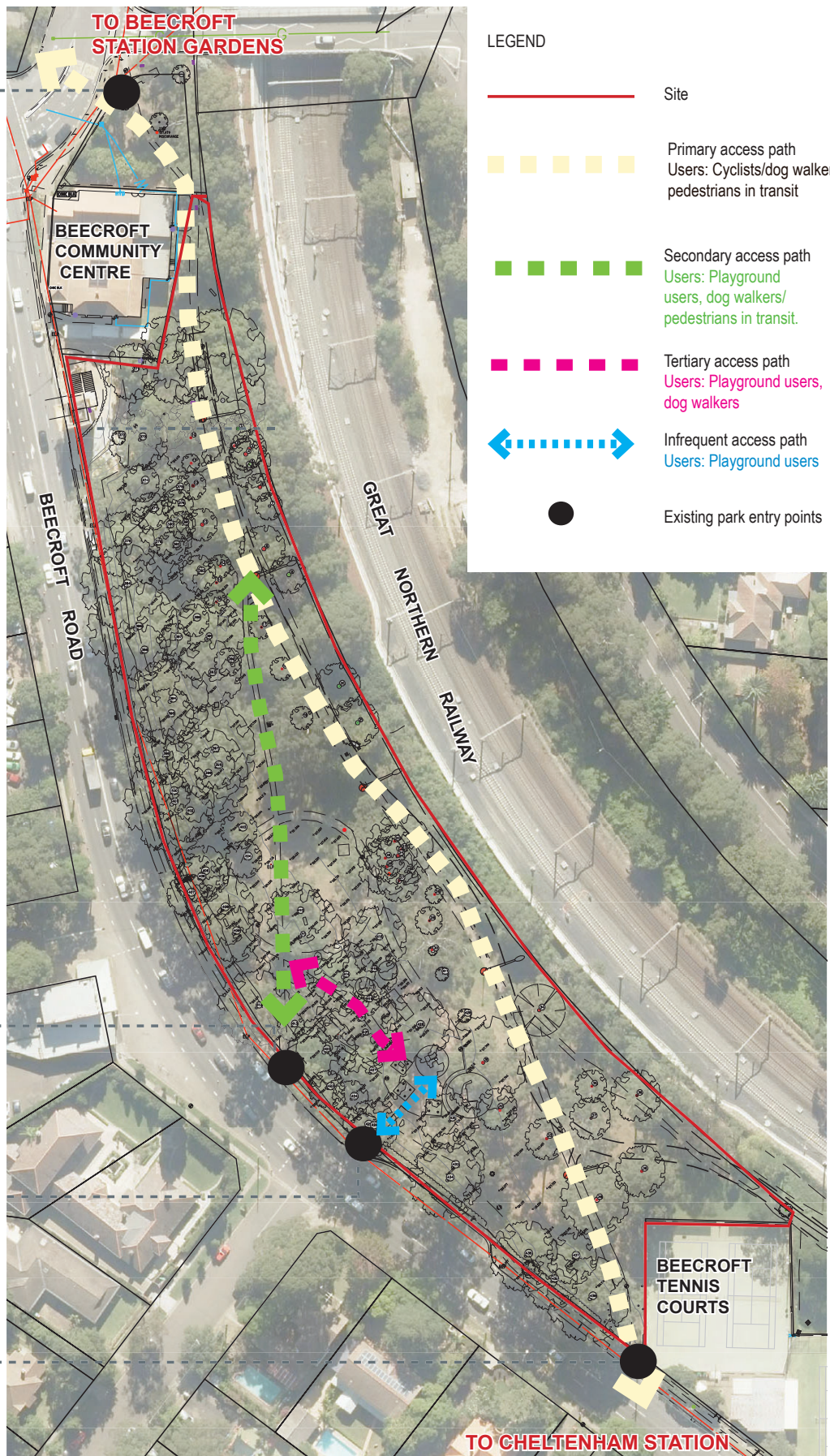
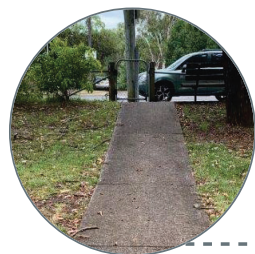




Site Photos



# LEGEND

- Site
- Primary access path  
Users: Cyclists/dog walkers/  
pedestrians in transit
- Secondary access path  
Users: Playground  
users, dog walkers/  
pedestrians in transit.
- Tertiary access path  
Users: Playground users,  
dog walkers
- Infrequent access path  
Users: Playground users
- Existing park entry points

## Parks, Trees and Recreation Branch

Hornsby Shire Council  
296 Peats Ferry Road, Hornsby  
PO Box 37, Hornsby NSW 1630

Telephone 9847 6666  
8.30am - 5pm Mon-Fri

[hornsby.nsw.gov.au](http://hornsby.nsw.gov.au)

## BEECROFT VILLAGE GREEN LANDSCAPE MASTER PLAN SITE CONNECTIONS & PATH HIERARCHY ANALYSIS





## Site Photos



**1** Existing heritage listed turpentine ironbark forest.



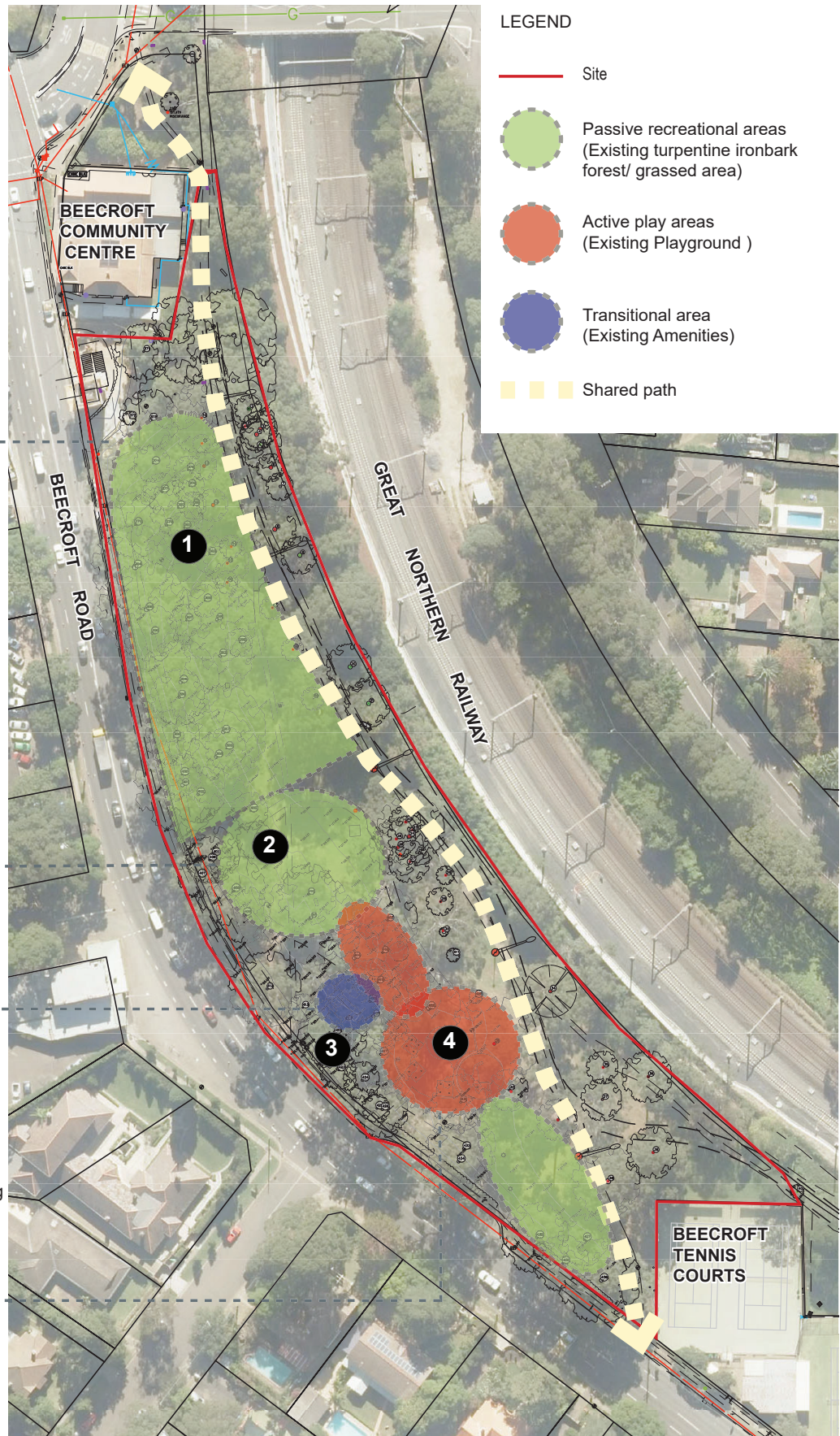
**2** Existing open recreational space.



**3** Existing amenities building



**4** Existing playground



## Parks, Trees and Recreation Branch

Hornsby Shire Council  
296 Peats Ferry Road, Hornsby  
PO Box 37, Hornsby NSW 1630

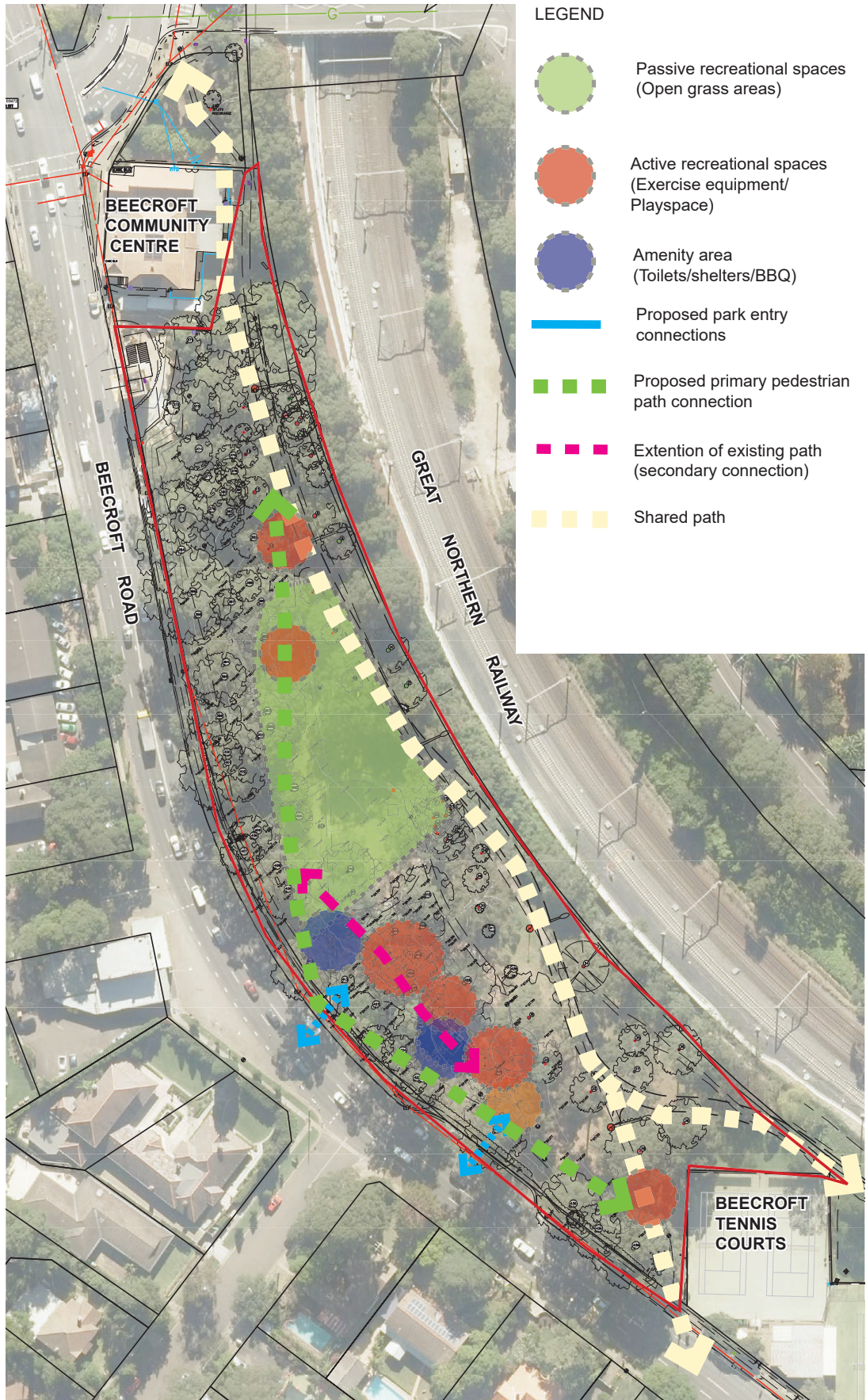
Telephone 9847 6666  
8.30am - 5pm Mon-Fri

[hornsby.nsw.gov.au](http://hornsby.nsw.gov.au)

## BEECROFT VILLAGE GREEN LANDSCAPE MASTER PLAN SPATIAL ANALYSIS







**Parks, Trees and Recreation Branch**

Hornsby Shire Council  
296 Peats Ferry Road, Hornsby  
PO Box 37, Hornsby NSW 1630

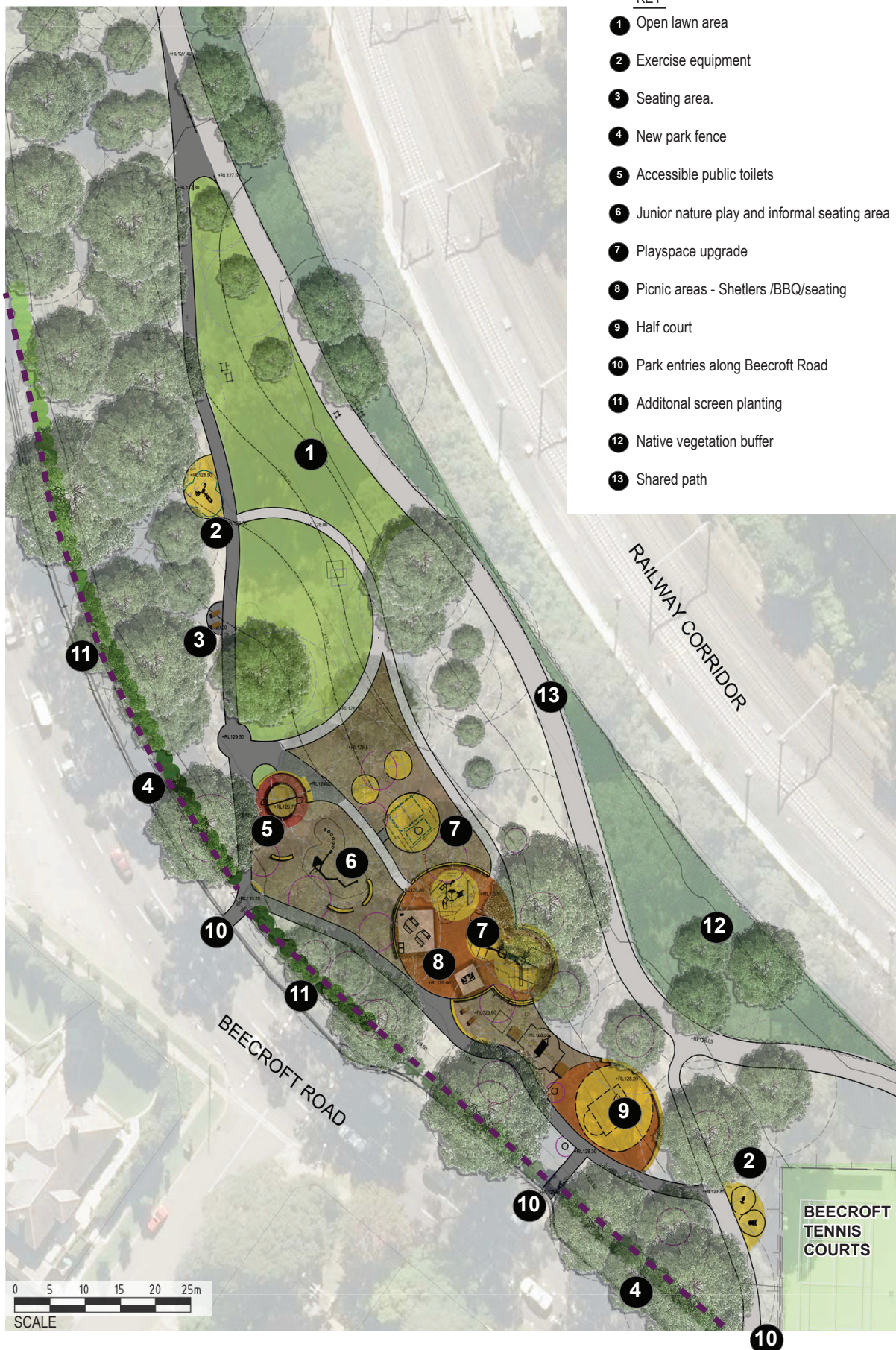
Telephone 9847 6666  
8.30am - 5pm Mon-Fri

[hornsby.nsw.gov.au](http://hornsby.nsw.gov.au)

**BEECROFT VILLAGE GREEN**  
LANDSCAPE MASTER PLAN  
PROPOSED PATH NETWORK & SPATIAL DISTRIBUTION







**Parks, Trees and Recreation Branch**

Hornsby Shire Council  
296 Peats Ferry Road, Hornsby  
PO Box 37, Hornsby NSW 1630

Telephone 9847 6666  
8.30am - 5pm Mon-Fri

[hornsby.nsw.gov.au](http://hornsby.nsw.gov.au)

**BEECROFT VILLAGE GREEN**  
LANDSCAPE MASTER PLAN  
CONCEPT







**Parks, Trees and Recreation Branch**

Hornsby Shire Council  
296 Peats Ferry Road, Hornsby  
PO Box 37, Hornsby NSW 1630

Telephone 9847 6666  
8.30am - 5pm Mon-Fri

[hornsby.nsw.gov.au](http://hornsby.nsw.gov.au)

**BEECROFT VILLAGE GREEN**  
LANDSCAPE MASTER PLAN- 1  
CONCEPT







- 4** Amenities upgrade to include two unisex accessible cubicles.



- 5** New park furniture including picnic shelters, additional seating, BBQ, bin enclosure, water bubbler and bike racks.



- 6** Basketball half court.



- 7** Outdoor exercise equipment.



SCALE 0 5 10 15 20 25m



**Parks, Trees and Recreation Branch**

Hornsby Shire Council  
296 Peats Ferry Road, Hornsby  
PO Box 37, Hornsby NSW 1630

Telephone 9847 6666  
8.30am - 5pm Mon-Fri

[hornsby.nsw.gov.au](http://hornsby.nsw.gov.au)

**BEECROFT VILLAGE GREEN**  
LANDSCAPE MASTER PLAN- 2  
CONCEPT







#### Parks, Trees and Recreation Branch

Hornsby Shire Council  
296 Peats Ferry Road, Hornsby  
PO Box 37, Hornsby NSW 1630

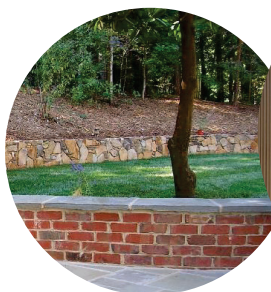
Telephone 9847 6666  
8.30am - 5pm Mon-Fri

[hornsby.nsw.gov.au](http://hornsby.nsw.gov.au)

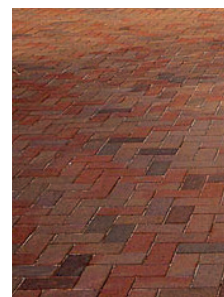
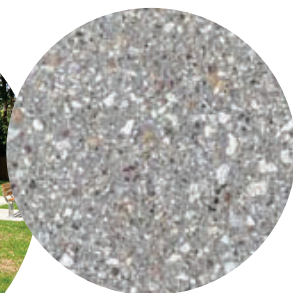
### BEECROFT VILLAGE GREEN PLAYGROUND RENEWAL CONCEPT & PRECEDENT IMAGERY



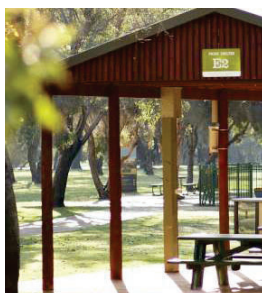




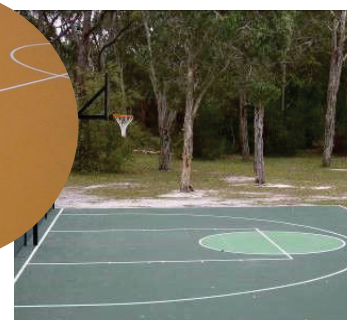
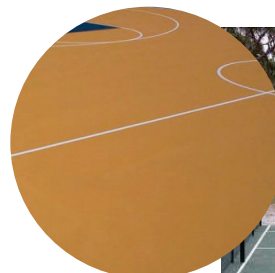
**Walls & fencing** - Walls to amenities building, seating, low terracing walls and fencing - sandstone and brick masonry. Park fencing - brick piers and metal fencing



**Paving** - Paths and picnic areas - Concrete and brick paving



**Park furniture, exercise and play equipment** - Neutral palette in timber and metal



**Playground and half court surfacing** - Play mulch, playground impact attenuation and basketball court surfacing in neutral tones

**Parks, Trees and Recreation Branch**

Hornsby Shire Council  
296 Peats Ferry Road, Hornsby  
PO Box 37, Hornsby NSW 1630

Telephone 9847 6666  
8.30am - 5pm Mon-Fri

[hornsby.nsw.gov.au](http://hornsby.nsw.gov.au)

**BEECROFT VILLAGE GREEN**  
LANDSCAPE MASTER PLAN  
FINISHES & MATERIAL PALETTE

