

# FAGAN PARK CHILDREN'S FOREST

## 1 - FACE-TO-FACE CONSULTATION

### WHO?

GALSTON PUBLIC SCHOOL  
STUDENTS

18

GALSTON HIGH SCHOOL  
STUDENTS

12

ARCADIA PUBLIC SCHOOL  
STUDENTS

15

GALSTON PUBLIC SCHOOL  
LEARNING SUPPORT GROUP  
STUDENTS

5

KU GALSTON CHILDCARE  
CENTRE EDUCATORS

3

WARRAH SPECIALIST  
SCHOOL  
EDUCATOR

1

TOTAL CONSULTED

55



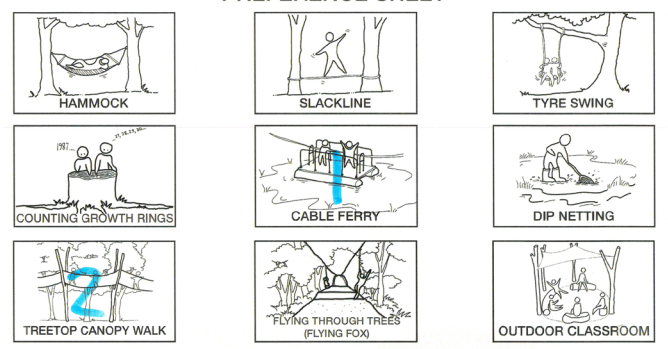
**THE CHILDREN'S FOREST**  
FAGAN PARK

### HOW?

**GULLIVER'S MAPPING  
STUDENTS**



**PREFERENCE SHEETS  
STUDENTS**



**TARGETED CONSULTATION  
EDUCATORS**



# 2 - GULLIVER'S MAPPING

## STUDENT CONSULTATION

51

### STUDENTS CONSULTED

16 - INFANTS (4 - 6 YEARS OLD)  
23 - PRIMARY SCHOOL (8 - 12 YEARS OLD)  
12 - HIGH SCHOOL (13 - 16 YEARS OLD)

1346

**TOTAL IDEAS:** INDIVIDUAL ELEMENTS OF A REQUESTED ITEM THAT ARE ANALYSED AND DIVIDED INTO THEMES

62

**TOTAL THEMES:** TEAM-DEFINED DESCRIPTORS OF WHAT IDEAS CAN BE ATTRIBUTED TO

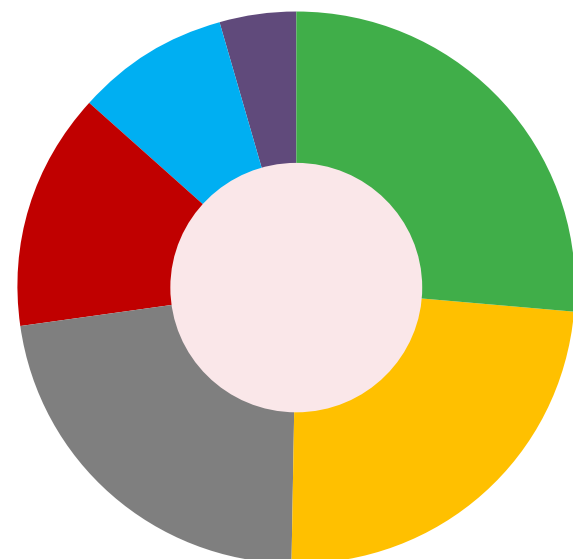
6

**CATEGORIES:** OVERALL ARCHETYPES OR GROUPINGS OF SIMILAR THEMES IN TERMS OF DESIGN

26

IDEAS PER CHILD ON AVERAGE

## GULLIVER'S MAPPING DESIGN CATEGORIES



27%

NATURE

24%

PLAY EQUIPMENT

22%

ACTION/SPORTS/MOVEMENT

14%

CONTEXT

9%

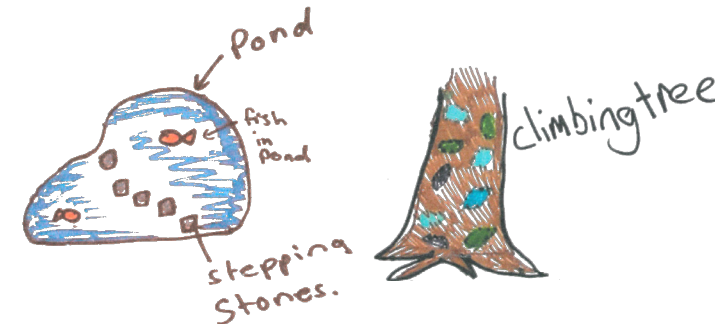
AMMENITIES/SUPPORT

4%

EDUCATION

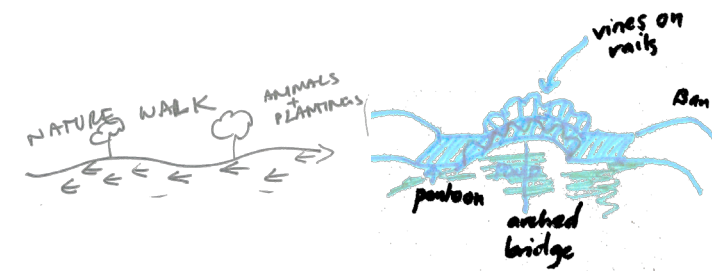
### NATURE 27%

TREES, WATER PLAY, NATURAL ELEMENTS, ANIMAL INTERACTION, FLOWERING & FRUITING PLANTS



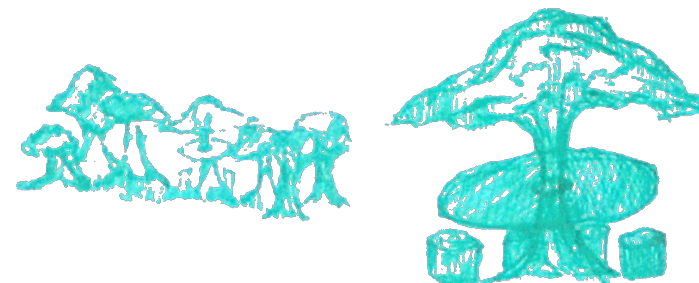
### ACTION/SPORTS 22%

CLIMBING, GAMES & OBSTACLE COURSE, JUMPING, WALKING TRAILS, BOARDWALKS



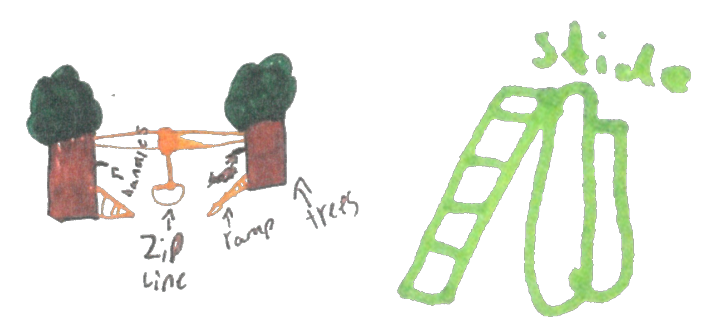
### AMENITIES/SUPPORT 9%

SCENERY, SENSORY ENGAGEMENT, QUIET PLACES, FUN & EXCITEMENT



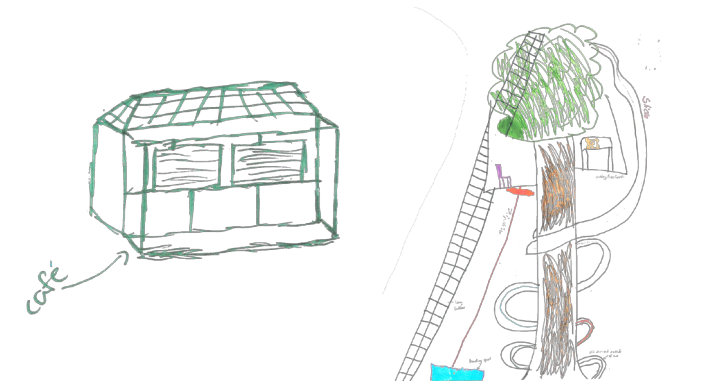
### PLAY EQUIPMENT 24%

SOCIAL PLAY, SWINGS, CUBBIES, LADDERS & RAMPS, SLIDES



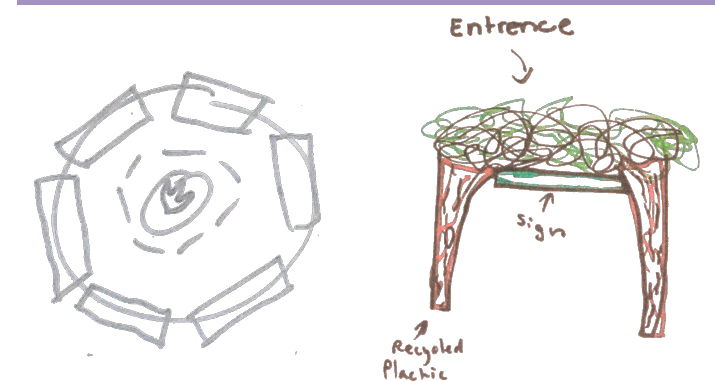
### CONTEXT 14%

SEATING, FOOD OUTLET, BBQ GATHERING POINTS, BEING UP HIGH



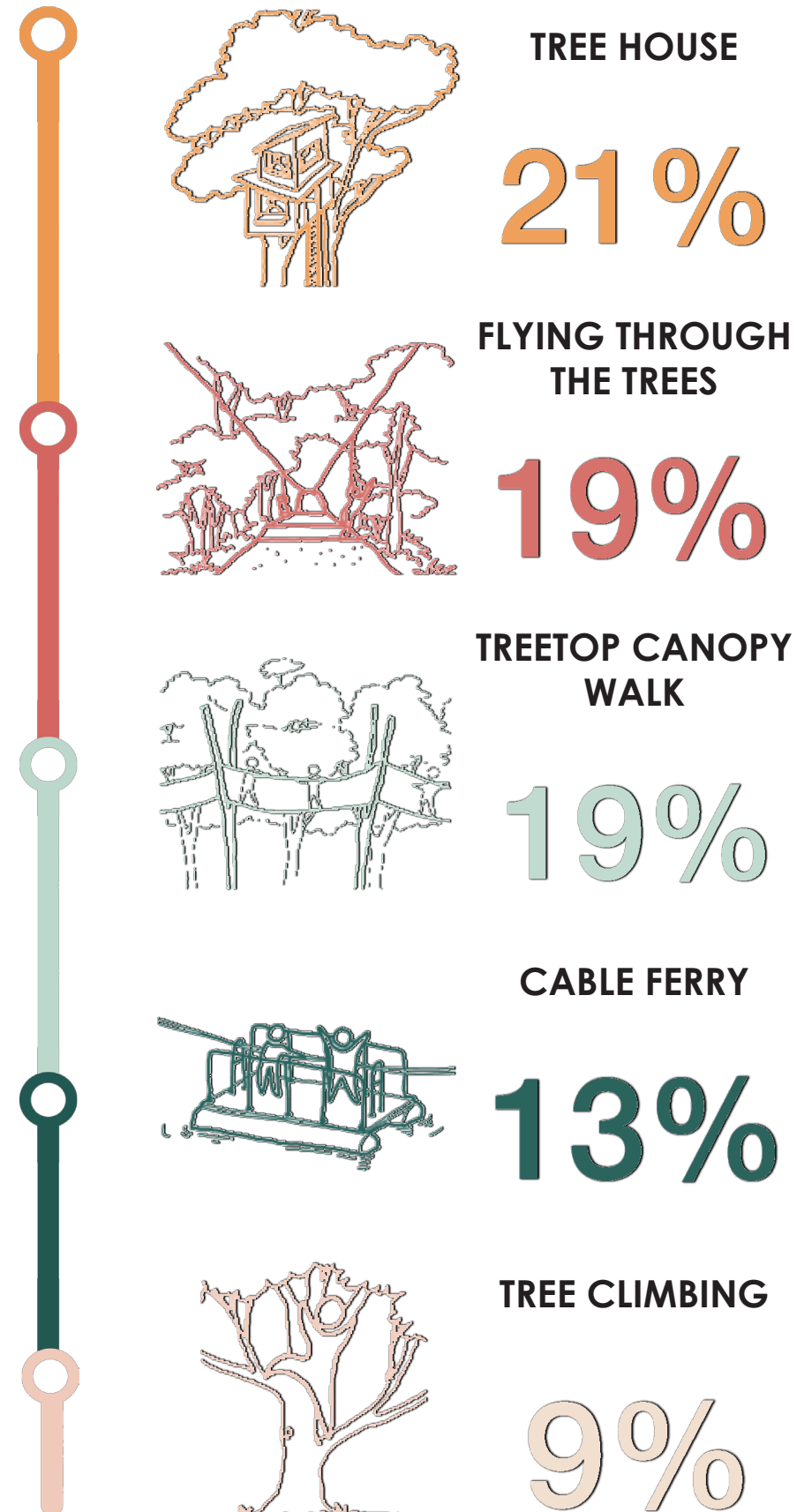
### EDUCATION 4%

OUTDOOR CLASSROOM, EDUCATIONAL SIGNS & QR CODES



## 3 - PREFERENCE SHEETS

### TOP ACTIVITIES FROM 24 CHOICES



## 4 - TARGETED CONSULTATION

### MOST REQUESTED FEATURES BY EDUCATORS

ADDITIONAL SAFETY  
MEASURES FOR  
BODIES OF WATER

SHORT WALKING  
DISTANCES

CURRICULUM BASED  
ACTIVITIES

DEMAND FOR  
QUALITY SETTINGS

DEDICATED TIMES  
FOR NOMINATED  
GROUPS

“FOREST SCHOOL”  
MOVEMENT  
(BUSH KINDY)

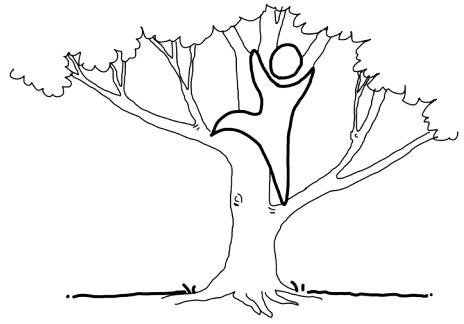
TOILETS\*

DEDICATED BUS  
TURNAROUND\*

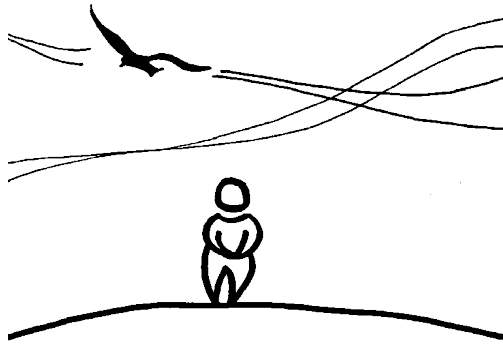
\* FUTURE STAGES DUE TO BUDGET



## 5 - UNIQUE FACTS



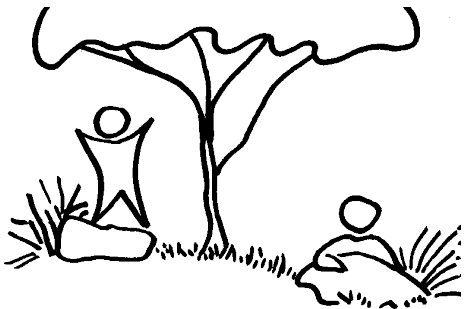
CHILDREN'S PRIORITY IN A FOREST IS TO HAVE "SOMETHING TO DO"



AN UNUSUALLY HIGH NUMBER OF COMMENTS REGARDING ATMOSPHERIC QUALITIES



CHILDREN WITH ADDITIONAL NEEDS REQUESTED AMENITIES THAT SUPPORT THEIR VISIT



NATURE & NATURE PLAY EMPHASIS OVER PLAY EQUIPMENT



USE OF SPACE FOR READING, HOMEWORK, EDUCATION, OUTDOOR CLASSROOM

## 6 - GUARANTEED SUCCESS

COMMUNITY CONSULTATION FOR THE CHILDREN'S FOREST IN FAGAN PARK HAS RESULTED IN FIVE KEY FACTORS THAT GUARANTEE THE SUCCESS OF THE PROJECT IN THE COMMUNITY'S EYES:

**HIGH QUALITY FOREST SETTING**

**SOCIAL CONTEXT**

**ATMOSPHERE**

**"SOMETHING TO DO"**

**SUPPORTIVE FEATURES**