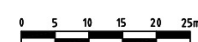




LANDSCAPE MASTERPLAN



Note proposed district level playground shown as concept and further community consultation will occur when the design is further developed

KEY

1. Upper water treatment and storage basin
2. Lower water treatment and storage basin
3. Sandstone seating wall
4. Upper circuit path over mound
5. 2m wide lower circuit path
6. Informal fitness steps amongst groundcovers and decorative grasses
7. Boardwalk
8. Existing Eucalypt grove along boundary
9. Fitness interval trail up mound featuring ropes and rock work
10. Fitness stations
11. Edward Bennett Oval
12. Sandstone seating wall
13. Stairs
14. 1.2m verge footpath
15. Expanded nature play area
16. Interactive play element
17. New prefabricated amenities block
18. Expanded picnic area hardstand
19. Existing loop track
20. Upgraded signage

PROJECT DESCRIPTION

This landscape masterplan introduces a number of elements into the park including a 2m wide circuit path, fitness stations and fitness trail, boardwalk through existing stands of Eucalypts, water treatment and harvesting basins, sandstone seating walls, verge footpath upgrades, a new amenities block and playground upgrades.

The proposed concrete circuit path (approx. 390m long) is planned to run around the perimeter of the park. A series of secondary paths and stairs will assist in navigating level changes into the park from Edward Bennett Drive.

The existing mound to the north of the oval will feature water harvesting basins, a boardwalk around its perimeter to showcase the existing mature trees and a fitness interval circuit that makes use of the level change on the rear of the mound. This area to the north of the oval will form a major highlight along the circuit path and will provide a point of difference to the largely flat path network.

A series of fitness pods, with a mix of fixed and moving items activate the northern tip of the park and are to be used in conjunction with the fitness trail that features a rock scramble track, ropes and informal steps.

The existing playground will be developed to incorporate an interactive play item (item 16). The north western edge of the playground will expand on the existing nature play. Additional native planting will frame the play area. At this stage the playground upgrade is only shown as concept and further community consultation will occur when the design is further developed

CHARACTER IMAGERY



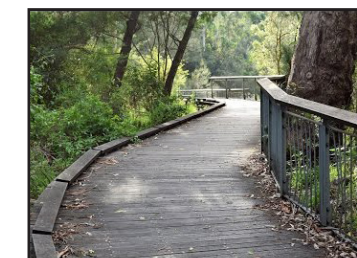
Fitness pods (item 10)



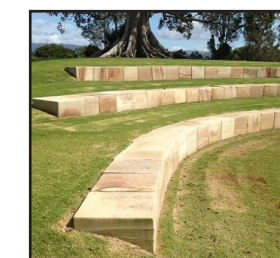
Informal fitness trail steps (item 6)



Rock scramble up mound (item 9)



Boardwalk showcasing gumtrees



Sandstone terraces



Rope to mound (item 9)



Mound fitness interval elements



Sandstone edge to basins



Interactive play (item 16)

Parks, Trees and Recreation Branch

Hornsby Shire Council
296 Peats Ferry Road, Hornsby
PO Box 37, Hornsby NSW 1630

Telephone 9847 6666
8.30am - 5pm Mon-Fri

hornsby.nsw.gov.au

EDWARD BENNETT OVAL

EDWARD BENNETT DRIVE, CHERRYBROOK
LANDSCAPE MASTERPLAN CONCEPT
NOVEMBER 2022

Proudly Funded By the
NSW Government in association with
Hornsby Shire Council



KEY

1. Upper basin
2. Connection to Bowerman Place
3. Lower basin with stonework perimeter
4. Sandstone seating
5. Upper circuit path
6. Lower circuit path
7. Informal steps amongst groundcovers and decorative grasses
8. Boardwalk
9. Existing Eucalypt grove along boundary
10. Fitness interval trail up mound featuring ropes and a rock scramble track
11. Fitness station
12. Edward Bennett Oval

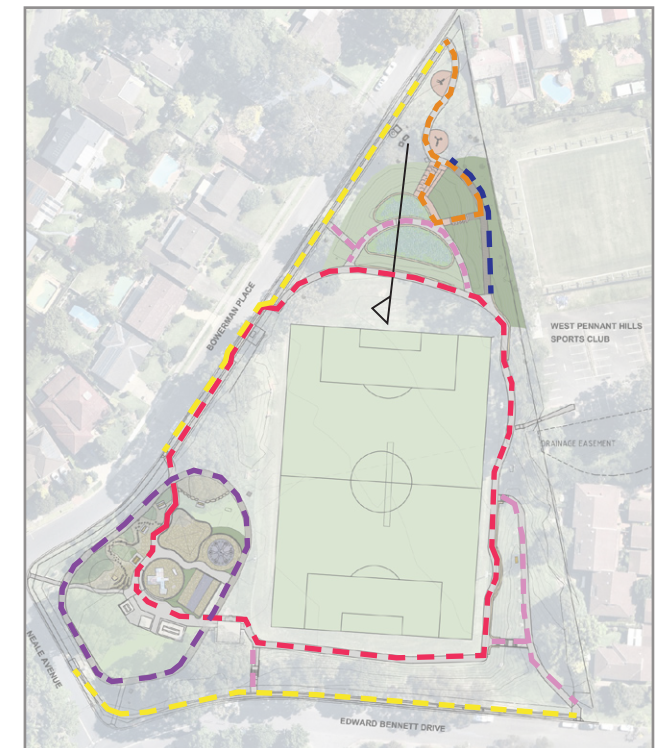
LEGEND

- Basin/ vegetation
- Mass planting / decorative grasses
- Boardwalk
- Sandstone edges / wall
- Fitness trail elements



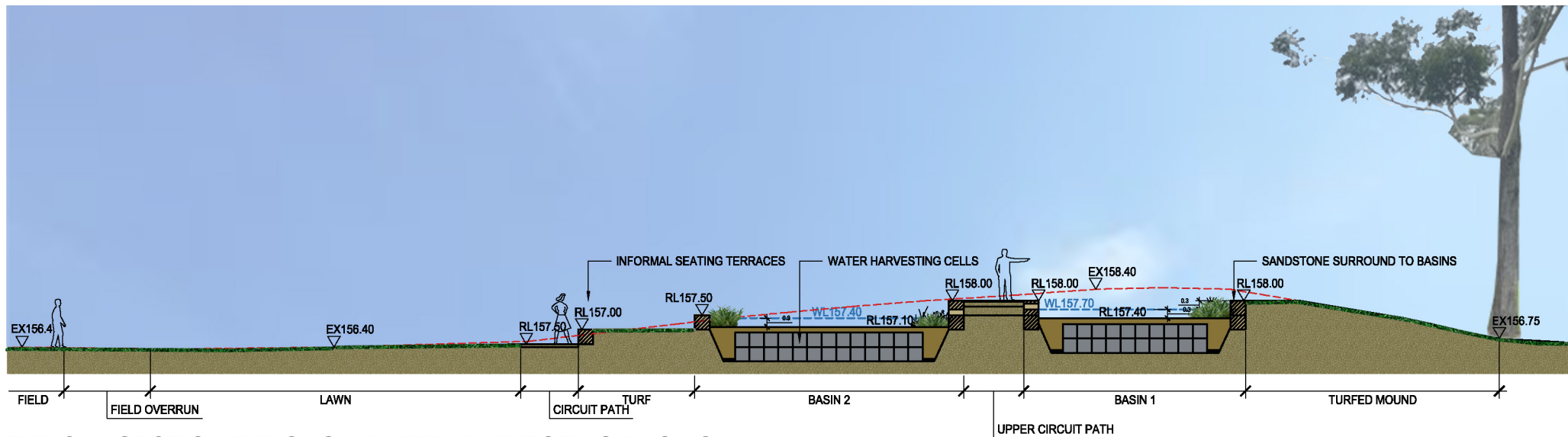
INDICATIVE CHARACTER SKETCH - NORTHERN PARKLANDS

CIRCULATION DIAGRAM



LEGEND

- 2m wide pedestrian circuit path
- Fitness trail
- Existing playground loop track
- New 1.2m verge footpaths
- Upper secondary paths
- Boardwalk



TYPICAL SECTION THROUGH WATER HARVESTING BASINS

EXISTING CHARACTER



Northern mound where fitness elements are proposed Existing playground and picnic area

Parks, Trees and Recreation Branch

Hornsby Shire Council
296 Peats Ferry Road, Hornsby
PO Box 37, Hornsby NSW 1630

Telephone 9847 6666
8.30am - 5pm Mon-Fri

hornsby.nsw.gov.au

EDWARD BENNETT OVAL

EDWARD BENNETT DRIVE, CHERRYBROOK
LANDSCAPE MASTERPLAN CONCEPT
NOVEMBER 2022

Proudly Funded By the
NSW Government in association with
Hornsby Shire Council

