



## KEY - EXISTING

- E1. Multipurpose Play Court
- E2. Flying Fox
- E3. Playspace
- E4. Toilet Block with 3 Cubicles

- Picnic shelter
- Existing Trees

## KEY - PROPOSED

- P1. Learn to Ride Area
- P2. Nature Play Area
- P3. Basins
- P4. Open Lawn Area
- P5. BBQ

- Pavement upgrades to improve accessibility
- Learn to Ride Track main circuit
- Learn to Ride Track secondary paths
- Bridges
- Picnic Area with Seating
- Safety / playground fencing
- Trees
- Softfall surfacing
- Shade sail
- Fitness equipment

## Project Description

Council is proposing to upgrade the Erlestoke Park activity areas in accordance with Council's Play Plan. The Play Plan has identified this park for renewal including a Learn-To-Ride play facility.

The proposed works will include:

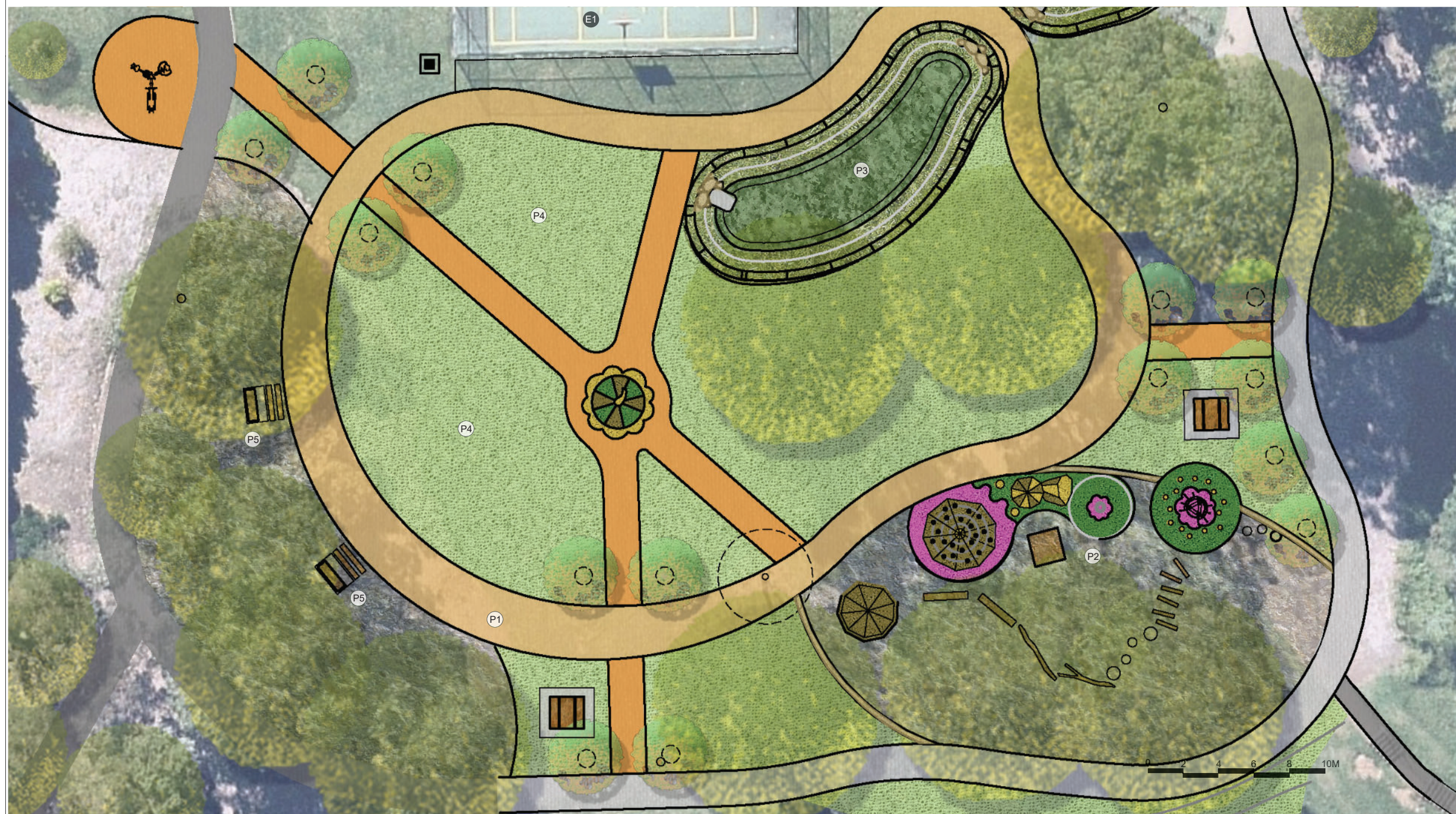
- A Learn-To-Ride play area with a loop circuit, enabling kids to build confidence learning to ride in a safe and fun landscape setting. Additional activities proposed around the track include nature play areas and open lawn areas for passive recreation. The play elements are inspired by the bluegum stands nearby and feature gumnut and gum flower play elements.
- An upgraded path is proposed on the Northern side of the park providing accessible connectivity between the Erlestoke Place car parking and the play areas. A secondary east-west path will connect the western Whipbird Place entry of the park with the existing play area. A new exercise hub will be located along the main circuit path near Whipbird Place
- A three-cubicle prefabricated modern toilet structure has recently been installed. The public toilet features external hand wash facilities and custom Eucalypt inspired screen walls allowing for passive surveillance. The public toilets will be secured each evening.
- A 1.2m playground/ safety fence is proposed along the north eastern corner of the park, as a protection measure due to the steep topography and dense vegetation in the area nearby the playground.
- A series of biofiltration basins will be constructed and will include screening devices at Whipbird Place and Erlestoke Place to capture gross litter and treat stormwater pollution such as nutrients and fine sediment from the upper catchment. The biofiltration basins will be a soil-plant based filtration system that will provide pollutant removal capabilities by supporting microbial processes that utilises nutrients amongst other pollutants. A bridge will feature over the larger basin where the main circuit path will crossover the biofiltration basins providing a point of interest along the main circuit track.
- Regrading of the northern lawn will be required to improve the overland drainage in this area. The pipework required to establish the basins will also be installed at this time. Some vegetation will be removed to facilitate these works. This will expand the northern lawn area. The BBQ will be relocated to the south of the main shelter.

Additional trees are proposed to be planted to shade the learn to ride area.

The works are envisioned to be undertaken in early 2023.

## LANDSCAPE MASTERPLAN





## LEARN-TO-RIDE CONCEPT PLAN

### KEY - EXISTING

E1. Multipurpose Play Court

Trees

### KEY - PROPOSED

P1. Learn to Ride Area

P2. Nature Play Area

P3. Biofiltration basins

P4. Open Lawn Area

P5. Seating with backrest

Pavement upgrades to improve accessibility

Learn to Ride Track main circuit

Learn to Ride Track secondary paths

Picnic Area with Seating

Safety Fence

Proposed Trees

Softfall surfacing

Fitness equipment



Learn-To-Ride



Drainage basins



The Bridge



Recently installed amenities block



Nature Play Area



Bluegum inspired play elements

## INDICATIVE IMAGES

Parks, Trees and Recreation Branch

Hornsby Shire Council  
296 Peats Ferry Road, Hornsby  
PO Box 37, Hornsby NSW 1630

Telephone 9847 6666  
8.30am-5pm Monday to Friday

[hornsby.nsw.gov.au](http://hornsby.nsw.gov.au)

## ERLESTOKE PARK, CASTLE HILL LEARN-TO-RIDE CONCEPT PLAN

SEPTEMBER 2022  
SHEET 2 OF 2

