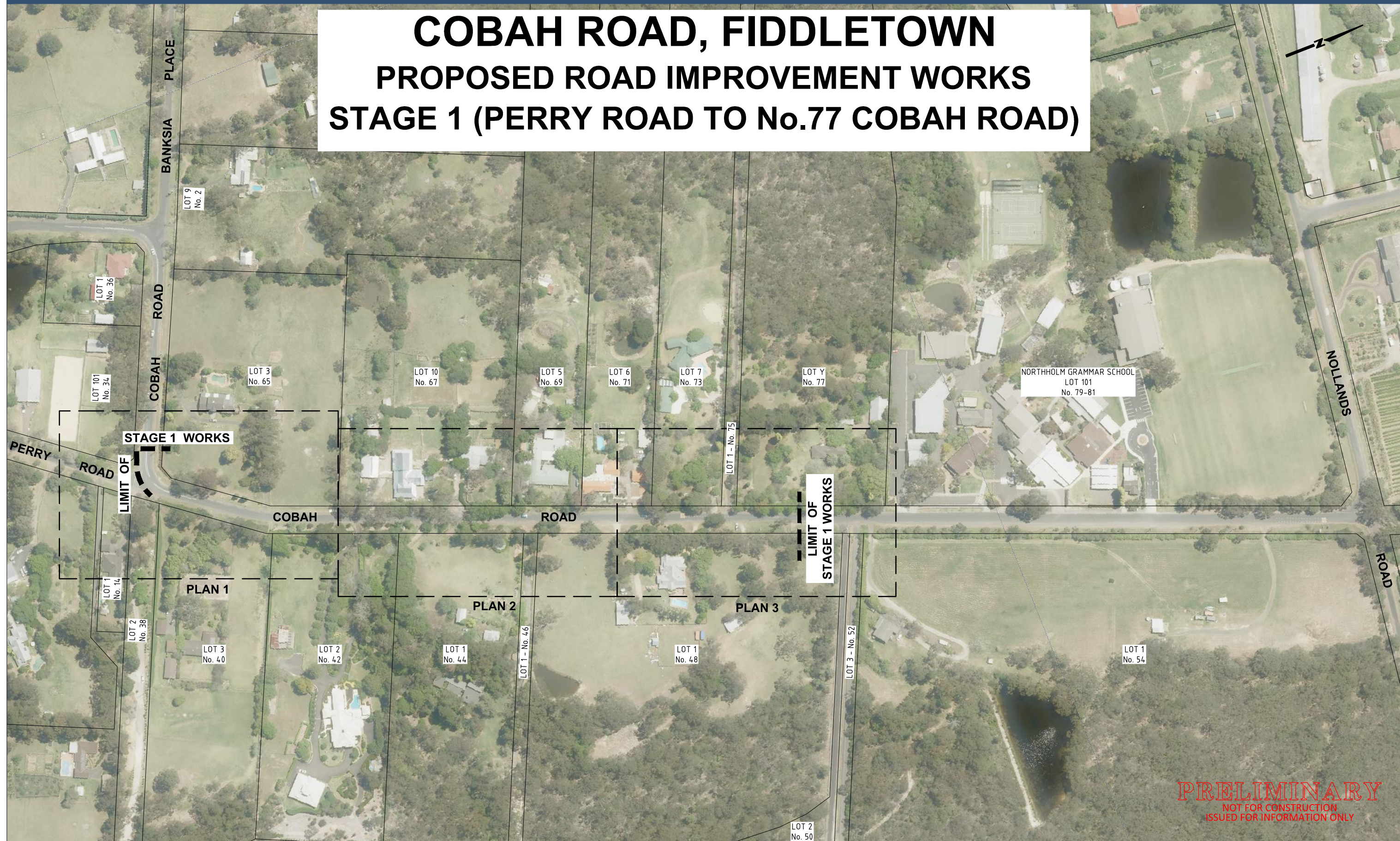


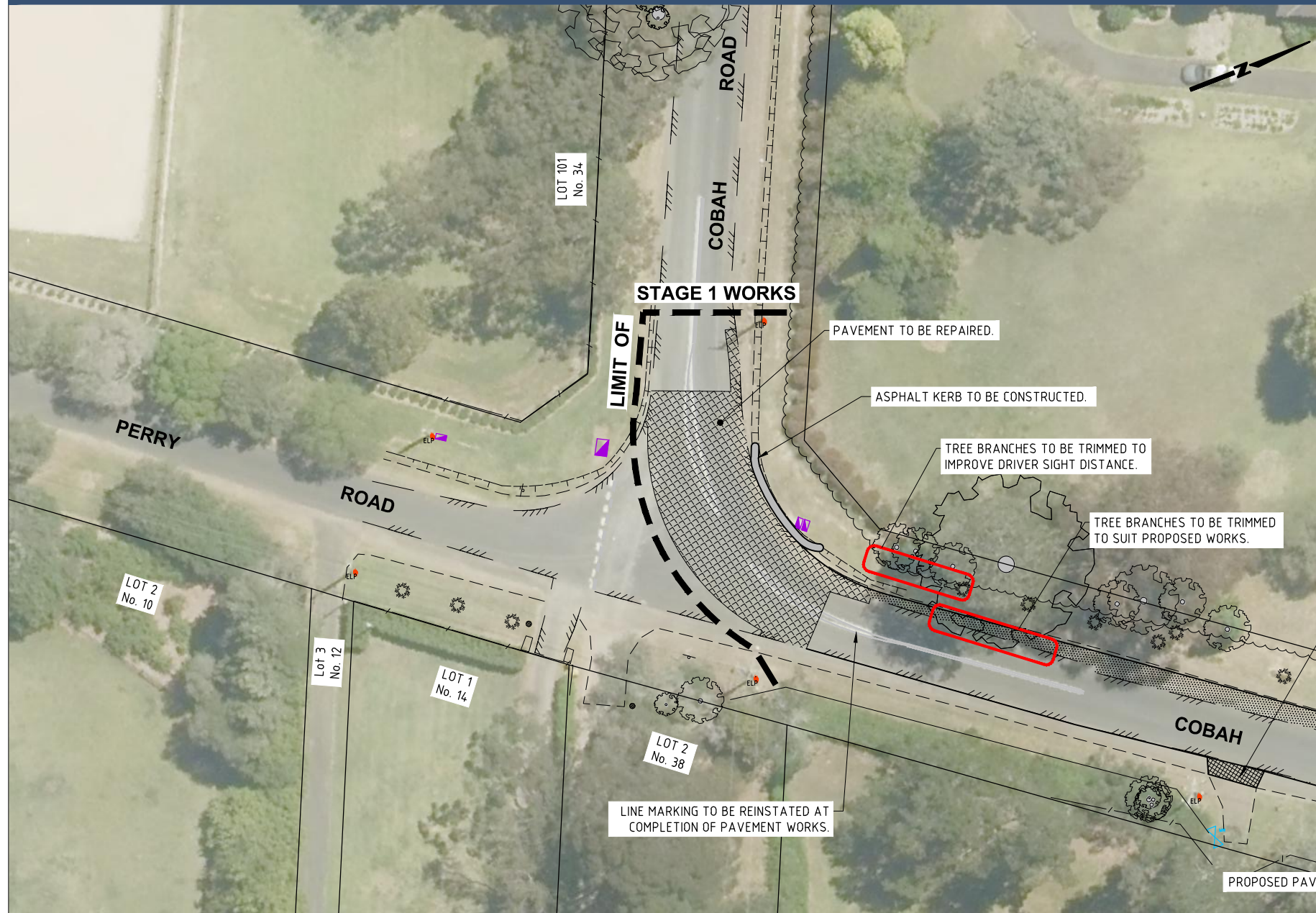
COBAH ROAD, FIDDLETOWN

PROPOSED ROAD IMPROVEMENT WORKS

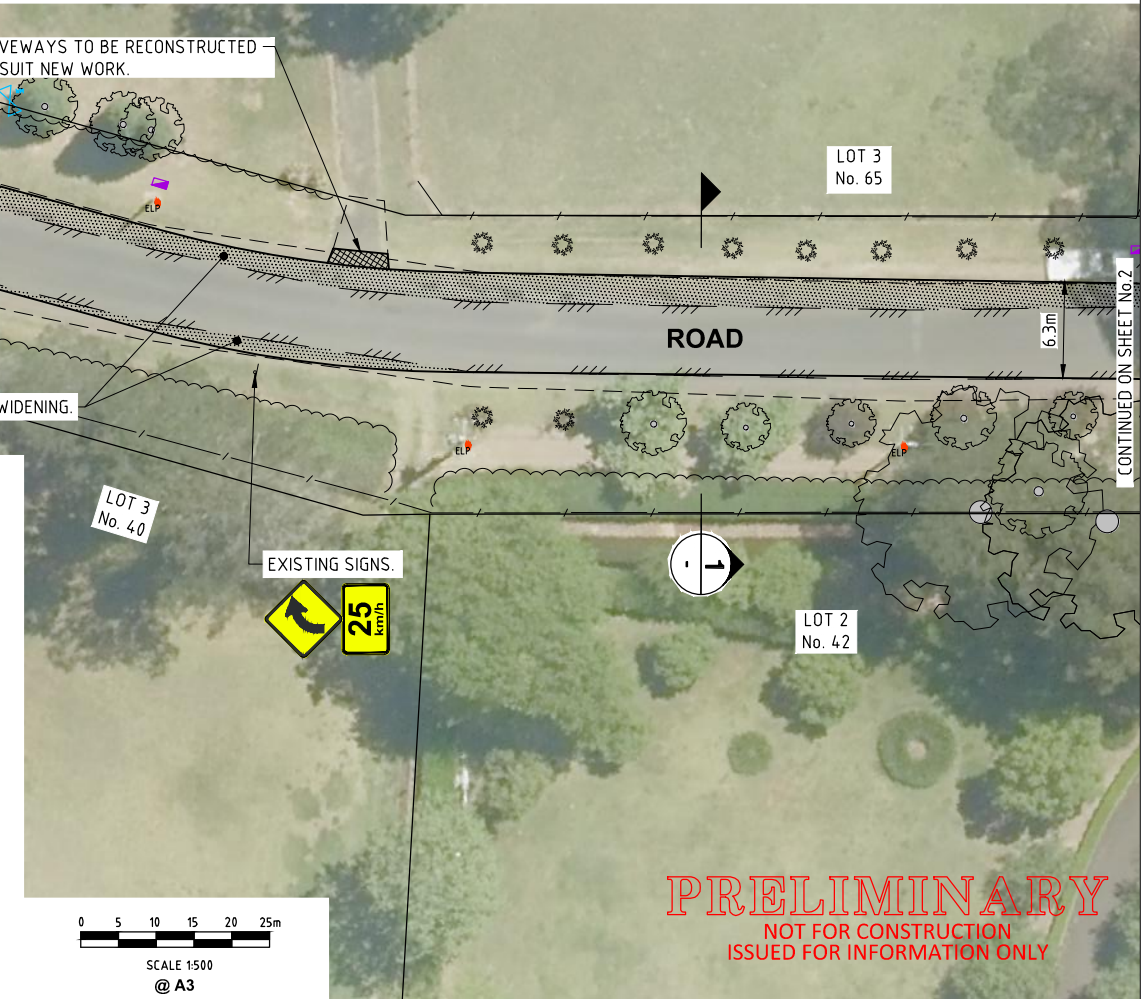
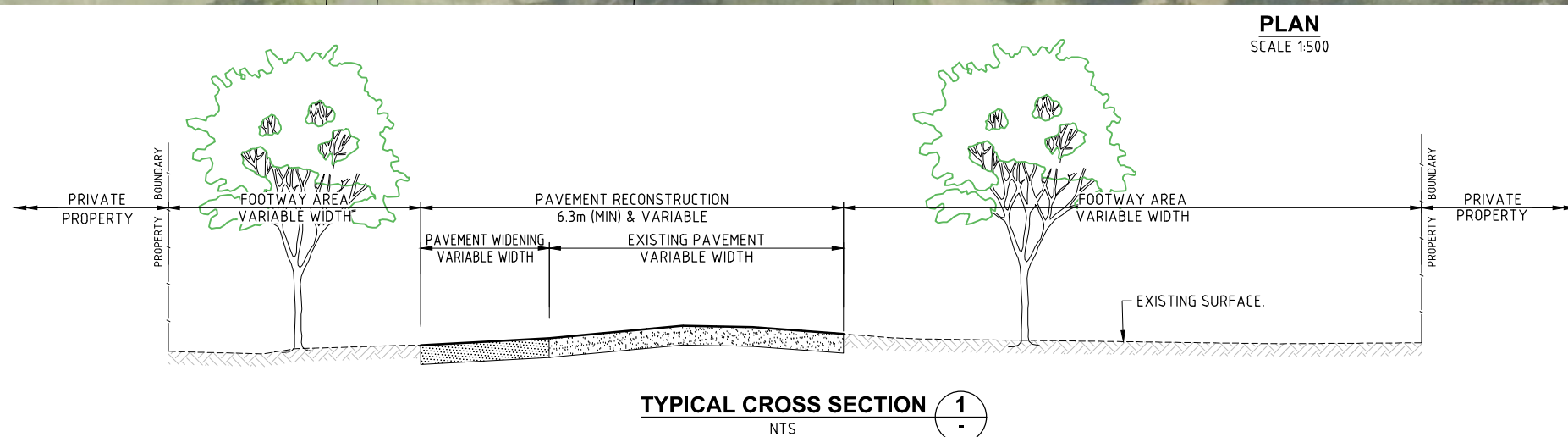
STAGE 1 (PERRY ROAD TO No.77 COBAH ROAD)



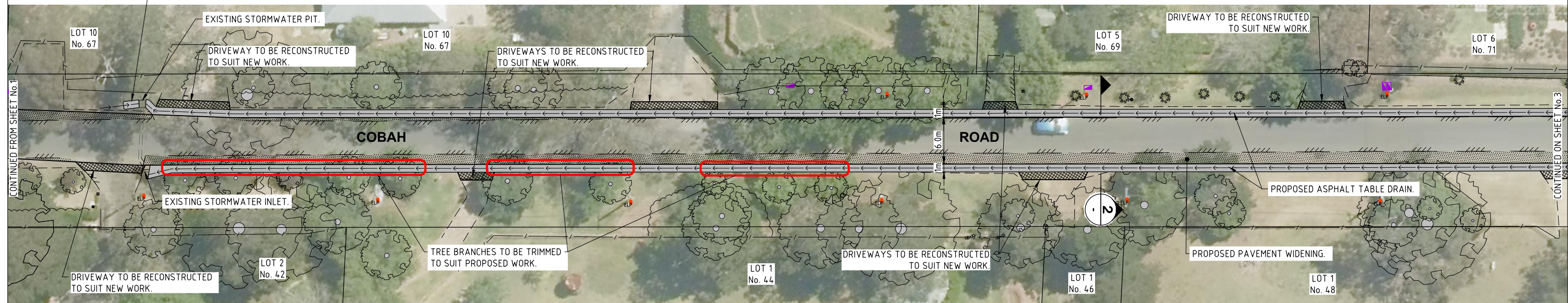
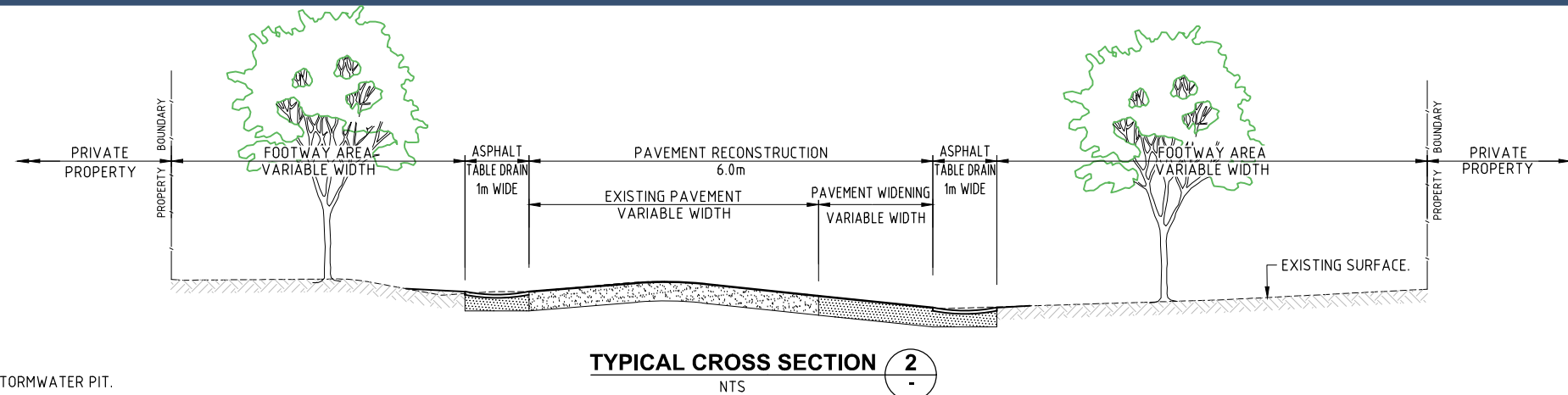
PRELIMINARY
NOT FOR CONSTRUCTION
ISSUED FOR INFORMATION ONLY



COBAH ROAD
LOOKING NORTH FROM PERRY ROAD



PRELIMINARY
NOT FOR CONSTRUCTION
ISSUED FOR INFORMATION ONLY

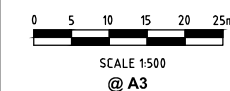


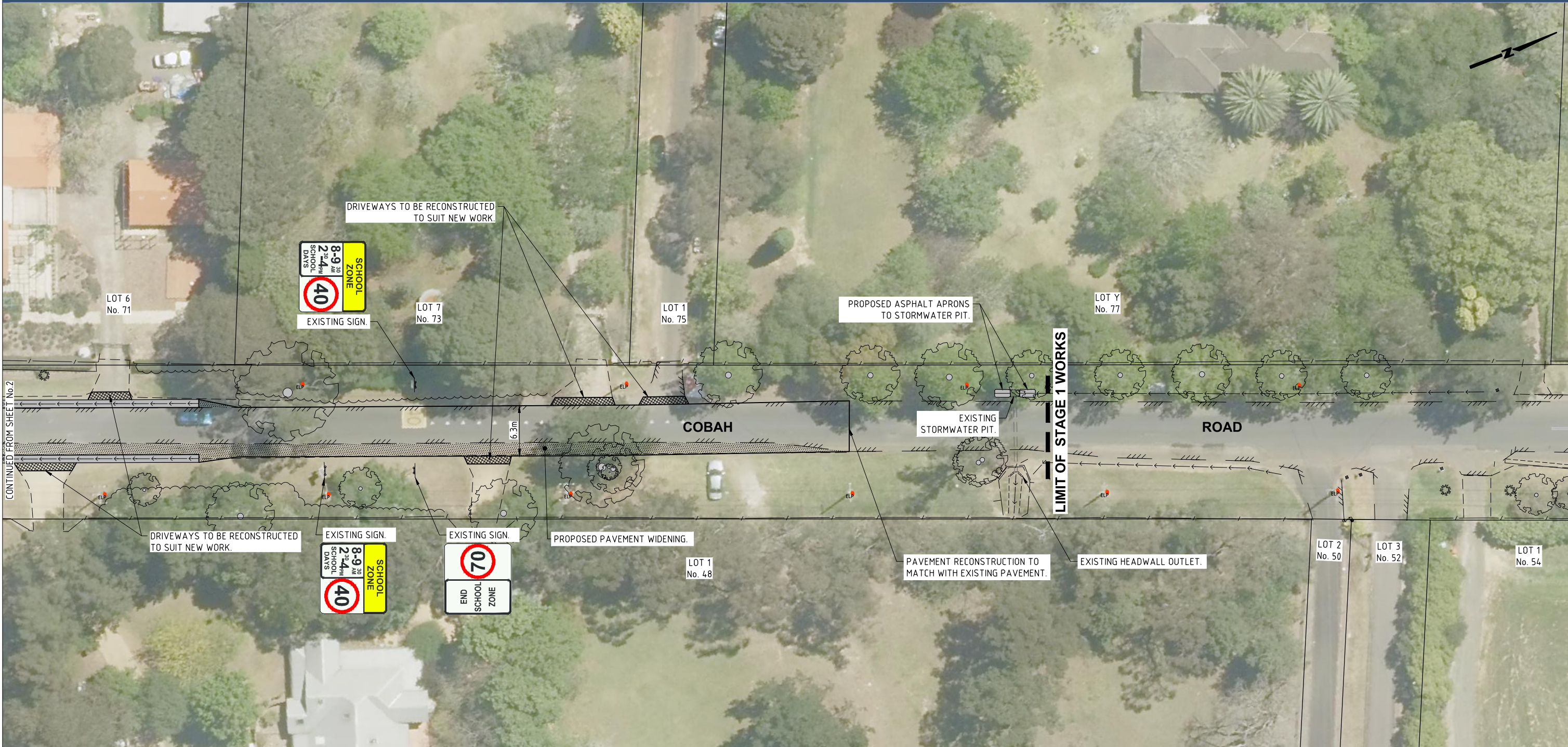
COBAH ROAD
LOOKING NORTH FROM OPPOSITE No.42



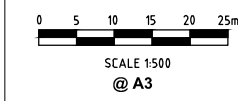
COBAH ROAD
LOOKING SOUTH FROM OPPOSITE No.67

PRELIMINARY
NOT FOR CONSTRUCTION
ISSUED FOR INFORMATION ONLY





PLAN
SCALE 1:500



PRELIMINARY
NOT FOR CONSTRUCTION
ISSUED FOR INFORMATION ONLY