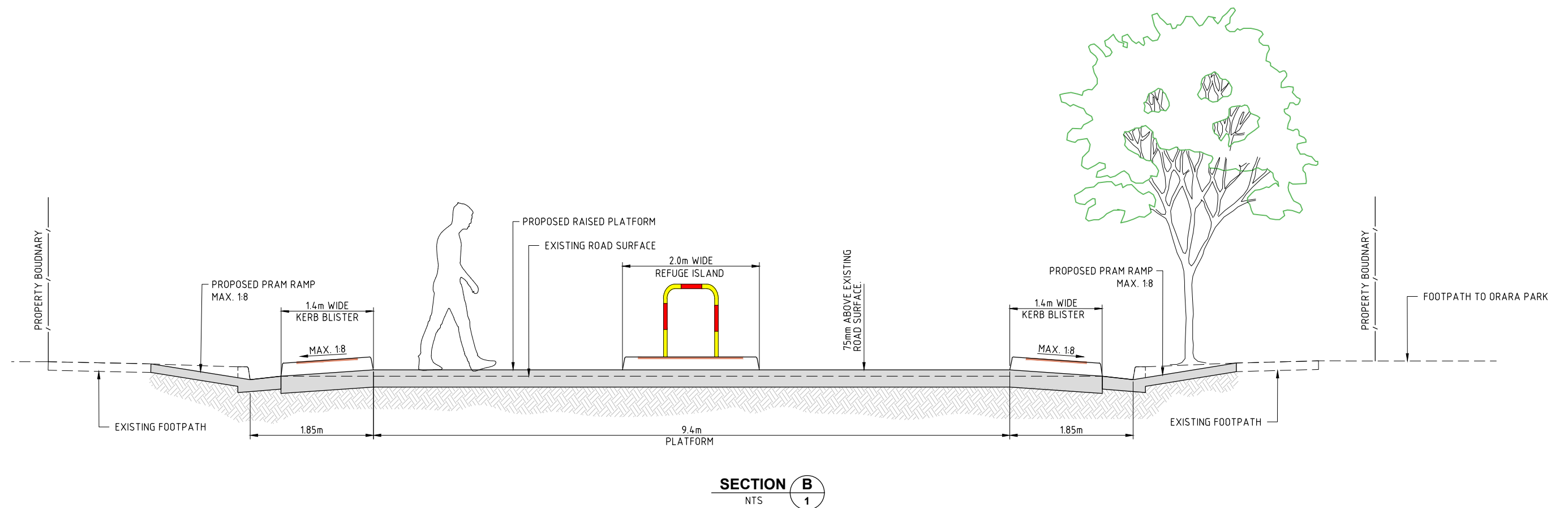
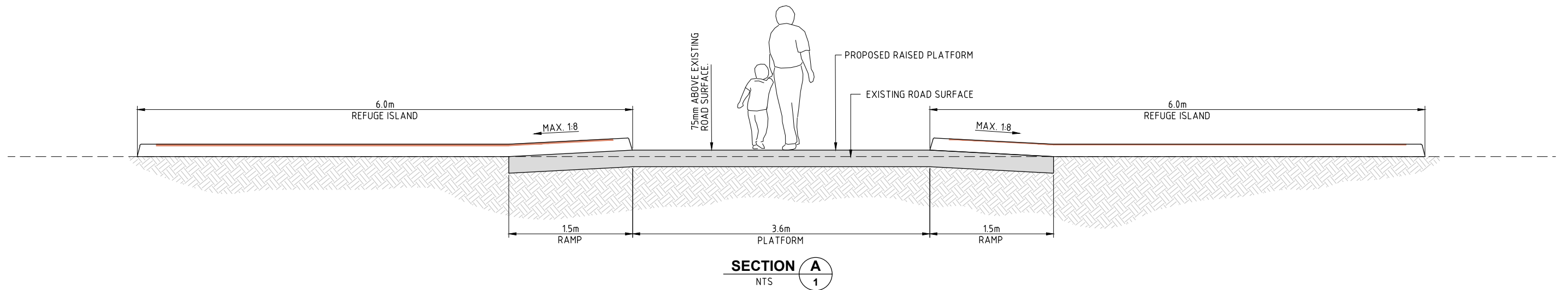


PRELIMINARY
NOT FOR CONSTRUCTION
ISSUED FOR INFORMATION ONLY



PRELIMINARY
NOT FOR CONSTRUCTION
ISSUED FOR INFORMATION ONLY

Design and Construction Branch
Hornsby Shire Council
296 Peats Ferry Road, Hornsby
PO Box 37, Hornsby NSW 1630

Telephone 9847 6666
8.30am-5pm Monday to Friday

hornsby.nsw.gov.au

ROMSEY STREET, WAITARA PROPOSED RAISED PEDESTRIAN CROSSING

CROSSING SECTIONS - A & B

